

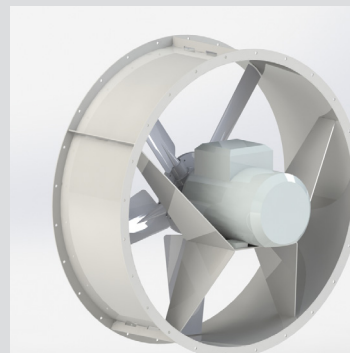
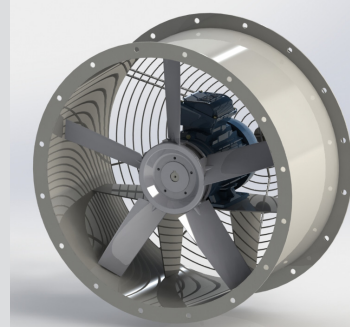


AXIAL FANS



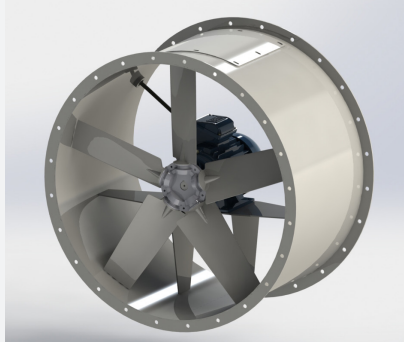
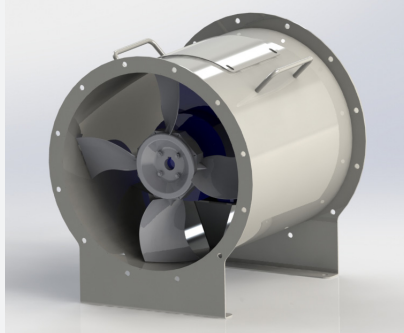
ADK - Short case axial fan

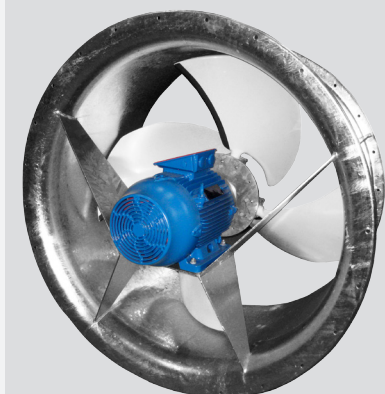
- Steel casing with welded motor pedestal, standard with hot dip galvanized finishing after construction
- Impeller with aluminium hub and glass fibre reinforced plastic or aluminium blades
- Standard IEC motors
- Standard diameters from 315 up to 1250 mm
- Volume from 0,2 m³/s up to 35 m³/s
- Special configurations on demand (tailor-made, stainless steel, Atex ...)



ADL - Long case axial fan

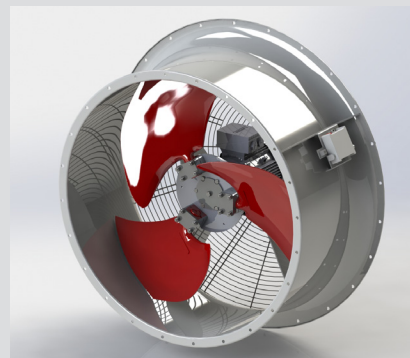
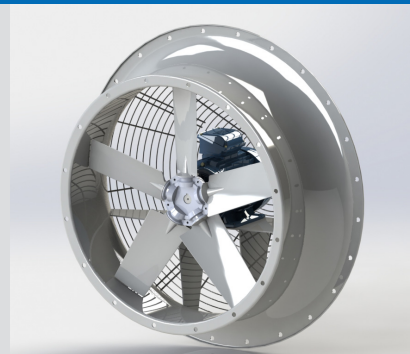
- Steel casing with welded motor pedestal, standard with hot dip galvanized finishing after construction
- Impeller with aluminium hub and glass fibre reinforced plastic or aluminium blades
- Standard IEC motors
- Motor completely inside casing
- Standard equipped with inspection door and flexible duct with cable gland
- Standard diameters from 315 up to 1250 mm
- Volume from 0,2 m³/s up to 35 m³/s
- Special configurations on demand (tailor-made, stainless steel, Atex ...)



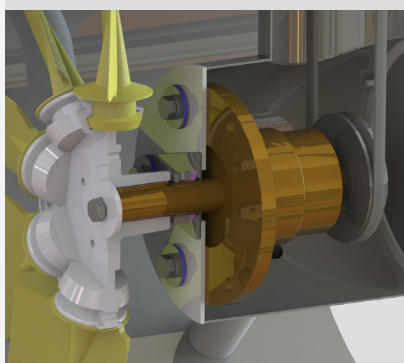
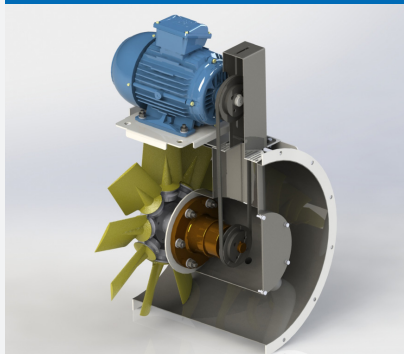


AVK - Axial fan with integrated inlet bell

- Steel casing with integrated inlet bell and welded motor pedestal, standard with hot dip galvanized finishing after construction
- Impeller with aluminium hub and glass fibre reinforced plastic or aluminium blades
- Standard IEC motors
- Standard diameters from 400 up to 1800 mm
- Volume from 0,5 m³/s up to 45 m³/s
- Special configurations on demand (tailor-made, stainless steel, Atex ...)



ADR - Belt-driven axial fan



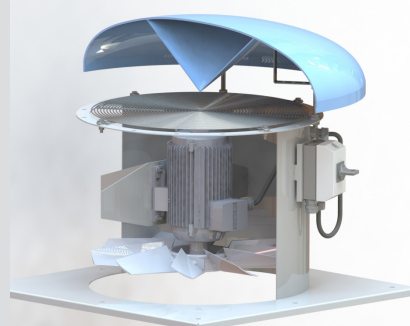
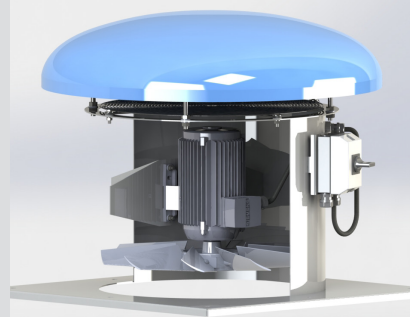
- Steel casing with welded bearing pedestal, standard with hot dip galvanized finishing after construction
- Bearing block and belt-drive completely isolated from the air stream
- Impeller with aluminium hub and glass fibre reinforced plastic or aluminium blades
- Standard IEC motors
- Standard diameters from 400 up to 1250 mm
- Volume from 1 m³/s up to 35 m³/s
- Special configurations on demand (tailor-made, stainless steel, Atex ...)



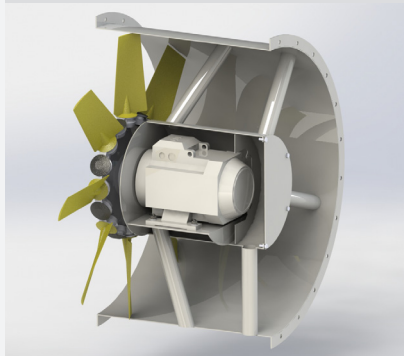
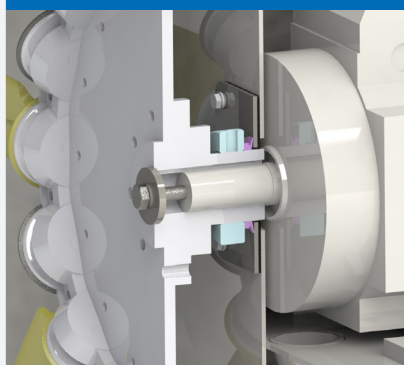


ADD - Axial roof fan

- Steel casing with welded motor pedestal and mounting plate, standard with hot dip galvanized finishing after construction
- Impeller with aluminium hub and glass fibre reinforced plastic or aluminium blades
- Standard IEC motors
- External terminal box
- Polyester rain protector hood with grid at outlet
- Standard diameters from 400 up to 1000 mm
- Volume from 0,5 m³/s up to 8 m³/s
- Special configurations on demand (tailor-made, stainless steel, Atex ...)



ADB - Bifurcated axial fan



- Steel casing with welded motor pedestal, standard with hot dip galvanized finishing after construction
- Direct driven with motor completely isolated of the air flow inside the casing
- Impeller with aluminium hub and glass fibre reinforced plastic or aluminium blades
- Standard IEC motors
- Standard diameters from 500 up to 1250 mm
- Volume from 0,5 m³/s up to 45 m³/s
- Special configurations on demand (tailor-made, stainless steel, Atex ...)





Novetec BV | Nieuwland Parc 440 | 2952DE Alblasterdam
The Netherlands | +31 (0)78 69 200 55 | www.novetec.nl